

POLE TYPE	POLE HEIGHT & GAUGE	POLE BASE DIAMETER	BASE PLATE DIMENSIONS	BASE PLATE SLOT SIZE	ANCHOR BOLTS DIMENSIONS	BOLT CIRCLE DIAMETER
II	20' x 10' ga.	6 3/8"	11 1/2" x 9 1/2" x 11 1/2"	1 1/4" x 1 1/4"	1" x 36"	9 1/2"
II-a	25' x 10' ga.	7 1/8"	11 1/2" x 9 1/2" x 11 1/2"	1 1/4" x 1 1/4"	1" x 36"	10"
III	30' x 7' ga.	8"	13 1/2" x 11" x 12 1/2"	1 1/4" x 1 1/4"	1 1/4" x 40"	11"
III-a	35' x 7' ga.	8 1/2"	13 1/2" x 11" x 12 1/2"	1 1/4" x 1 1/4"	1 1/4" x 44"	11 1/2"
X	30' x 10' ga.	8 1/2"	13 1/2" x 11" x 12 1/2"	1 1/4" x 1 1/4"	1 1/4" x 36"	11"
X-a	35' x 10' ga.	9"	13 1/2" x 11" x 12 1/2"	1 1/4" x 1 1/4"	1 1/4" x 36"	11 1/2"
XIV	20' x 10' ga. thick	7"	11 1/2" x 9 1/2" x 11 1/2"	1 1/4" x 1 1/4"	1" x 36"	10"

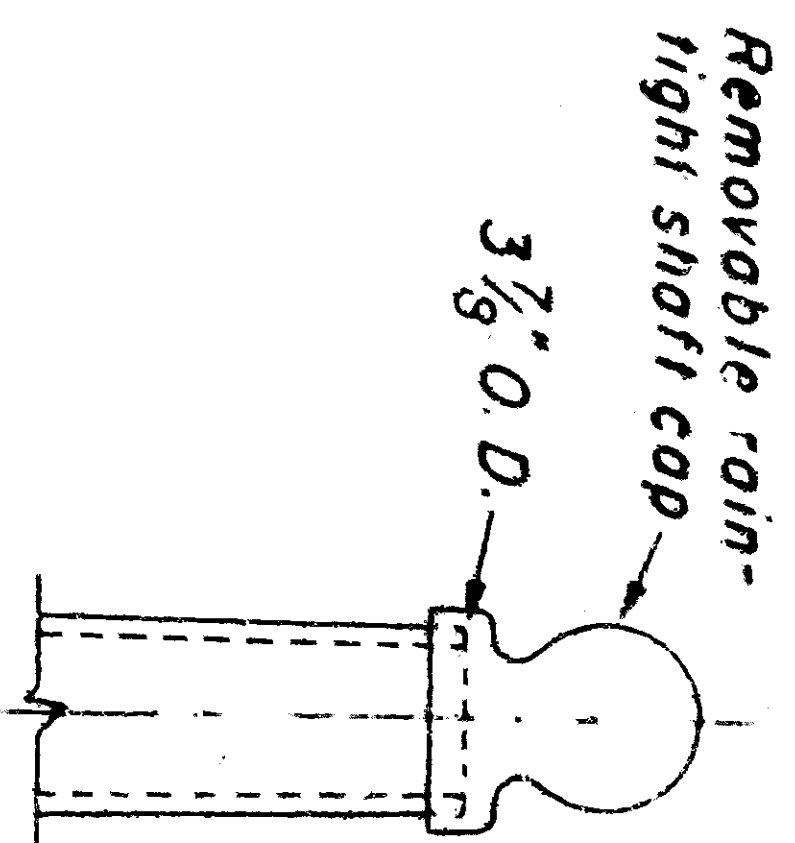
### BASE AND ANCHOR BOLT SCHEDULE

NOTE  
 \* If gage acceptable if fabricated from sheet steel of 40,000 p.s.i. minimum yield.  
 \* Length indicated does not include required 4"-90° bend. See Standard Electrical Details-Bridge (ES-7) for structure mounted standard.

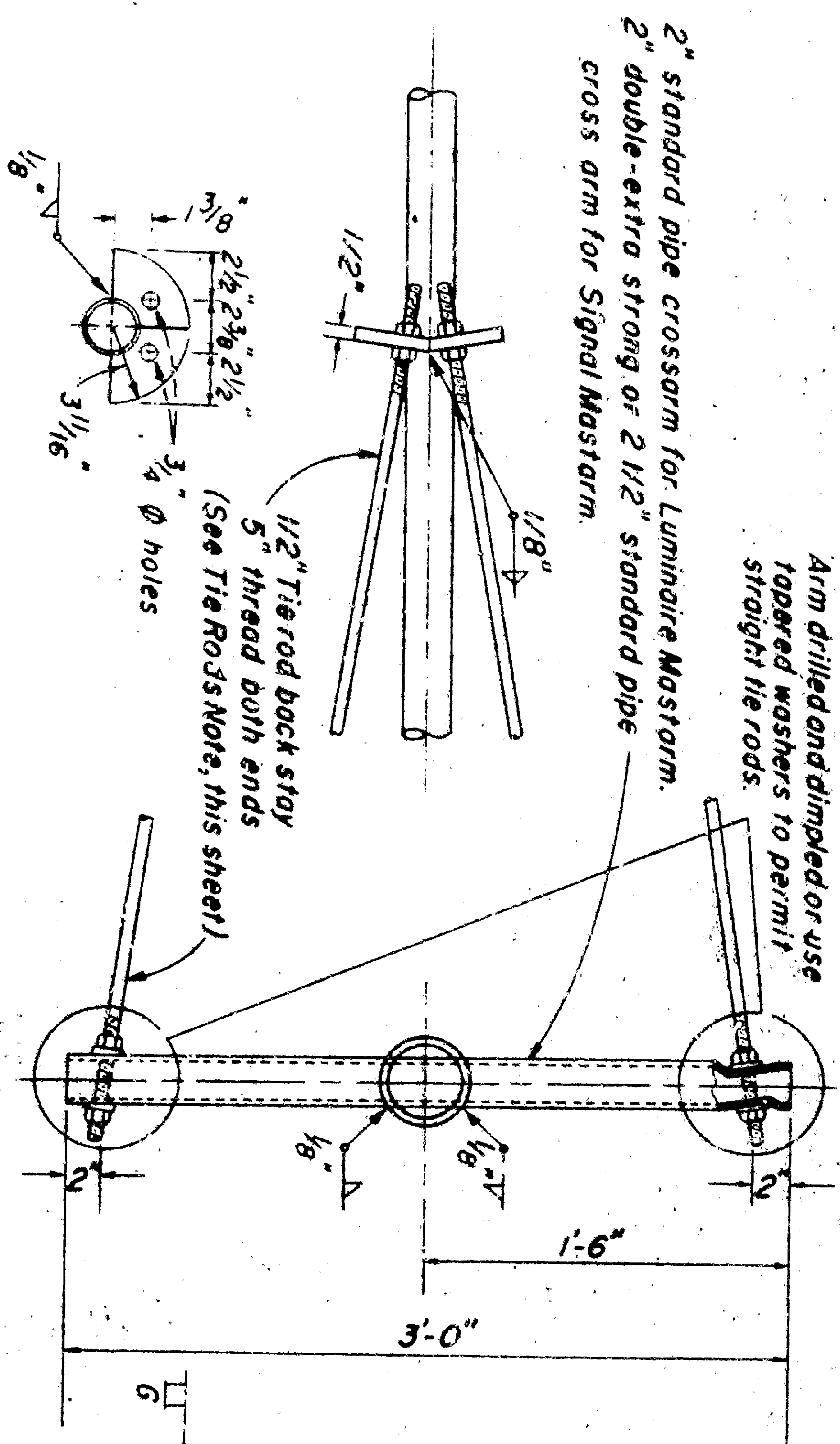
### TIE RODS

- All tie rods for most arms 8'-0" or less than 12'-0" in length shall be as shown.
- All traffic signal mast arms and mast arms 12' and longer for luminaires with in-signal ballasts shall be equipped with standard pipe tie rods with welded 5/8" round bolt tips on each end, threaded 5". Weld shall be covered with zinc-oxide paint or galvanized.
- Pipe tie rods shall be 3/4" for 12'-0" to 15'-0" mast arms and 1" for mast arms longer than 15'-0".

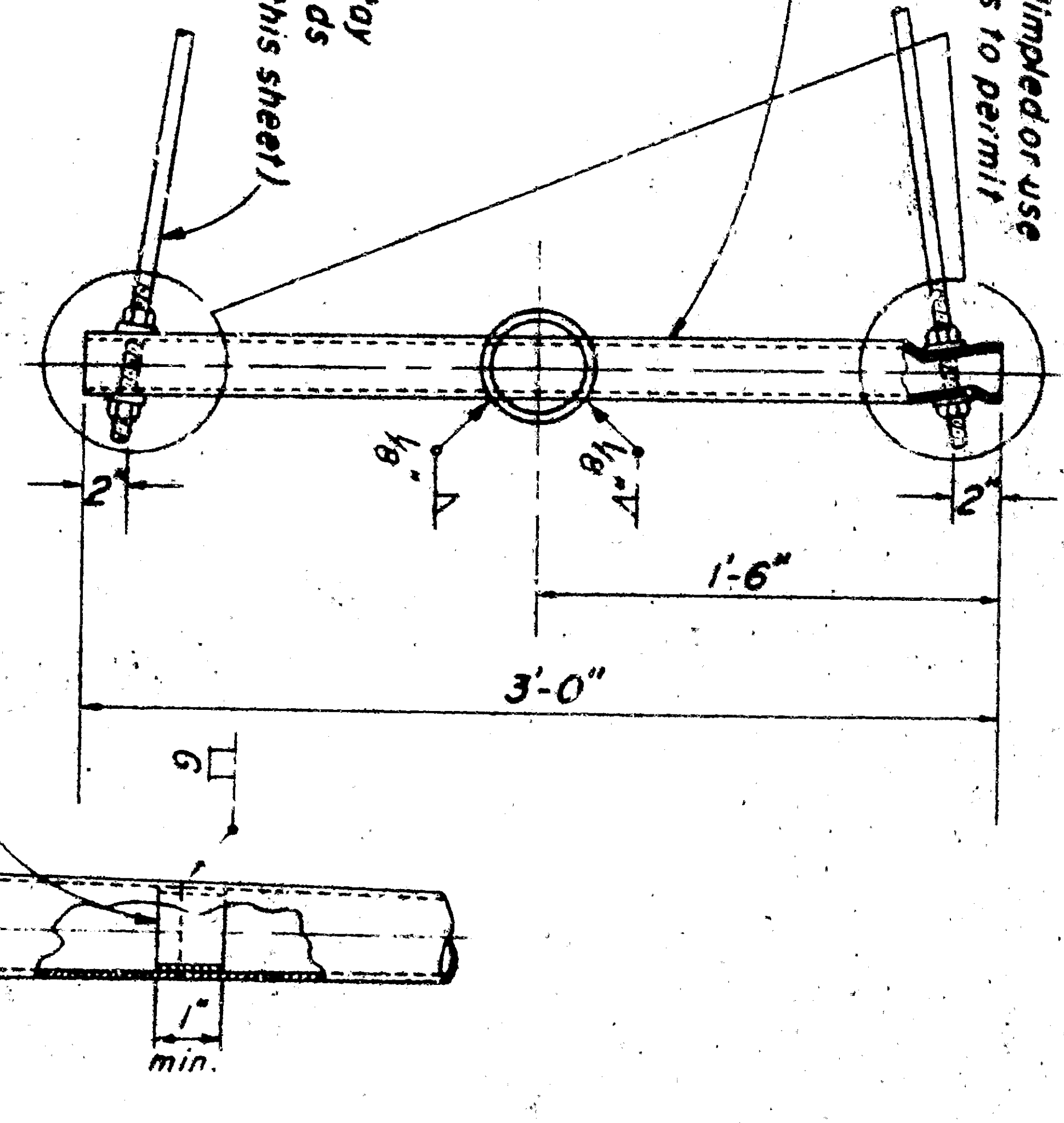
### POLE TOP



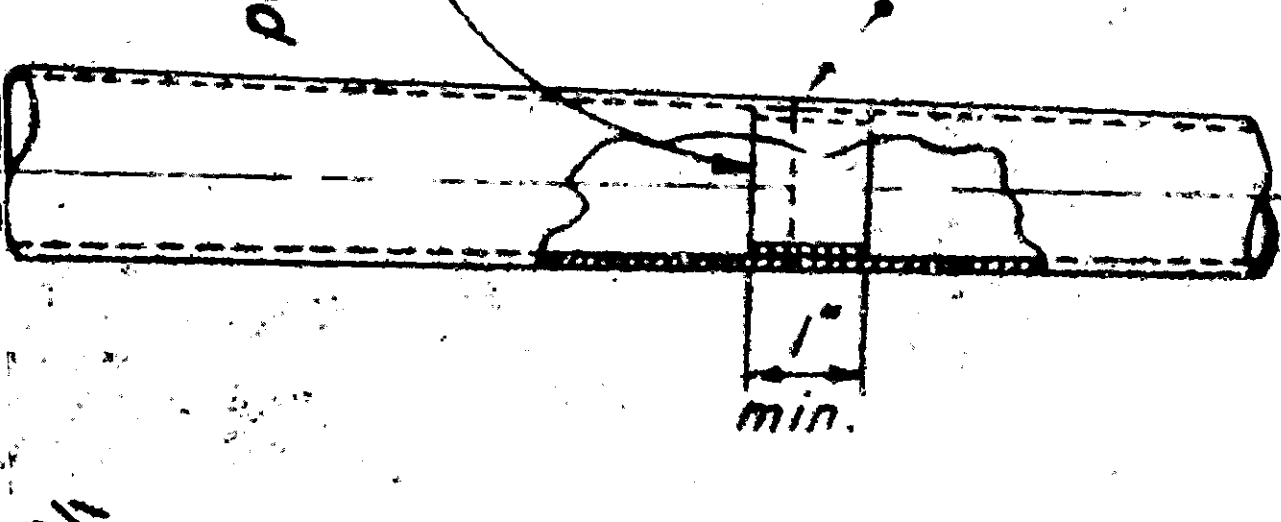
### PLAN



### ELEVATION

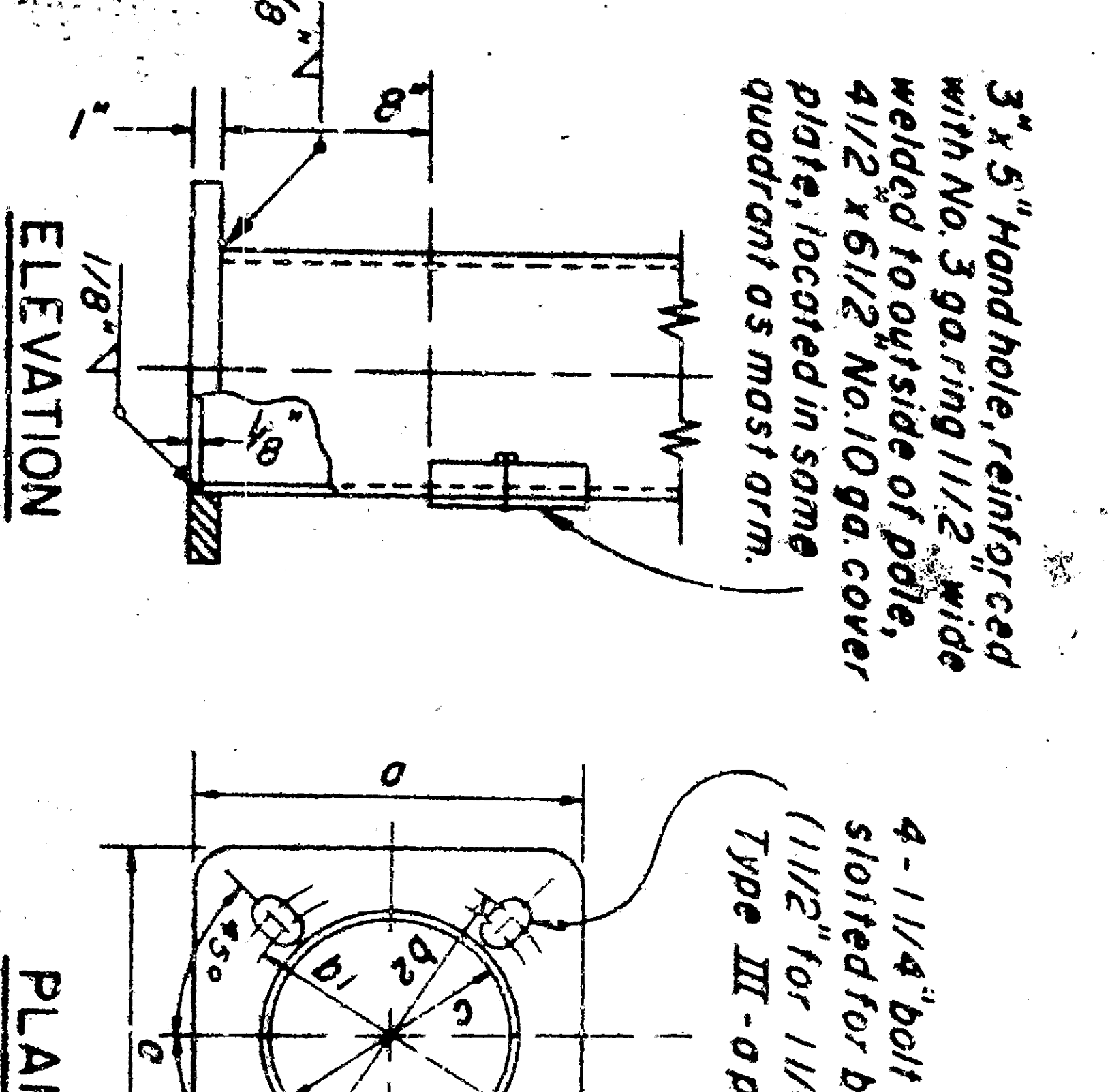


### POLE SPLICE



### ELEVATION

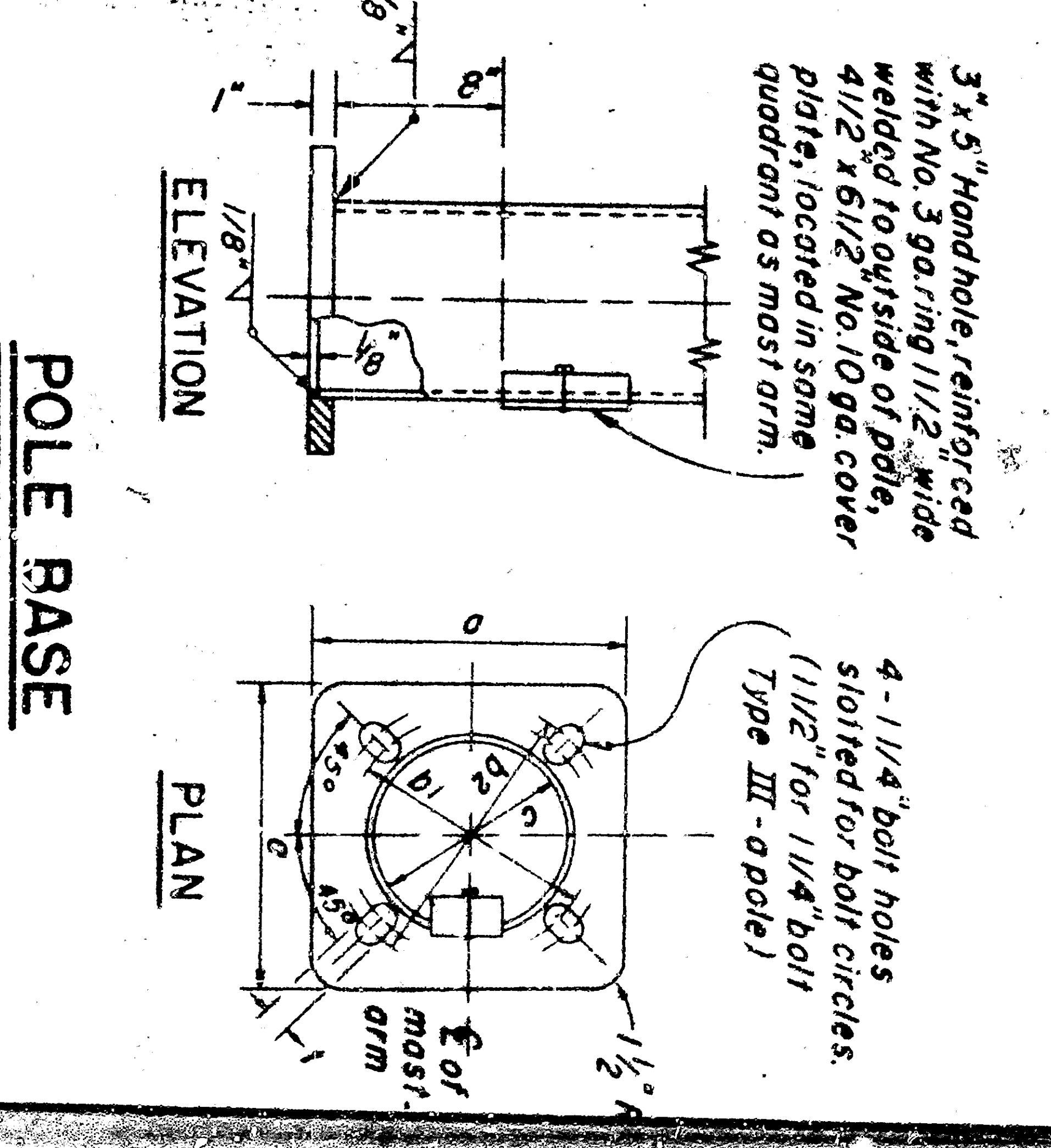
### PLAN



### POLE BASE

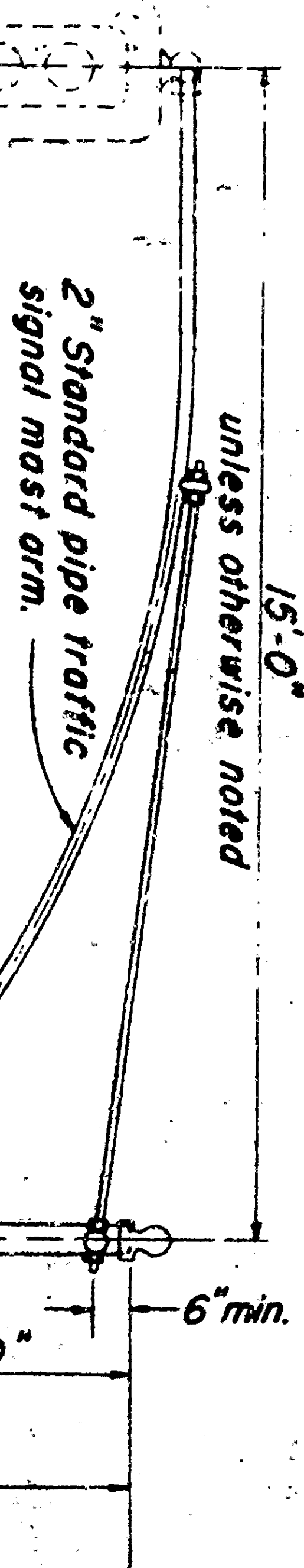
### ELEVATION

### PLAN



### MAST ARM TIE RODS AND CROSS ARM

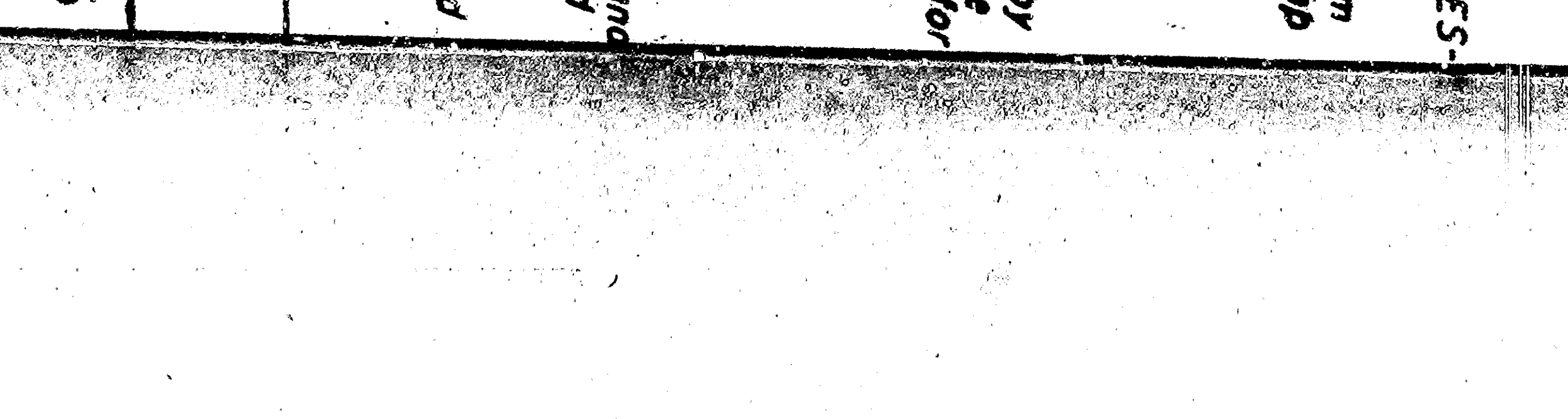
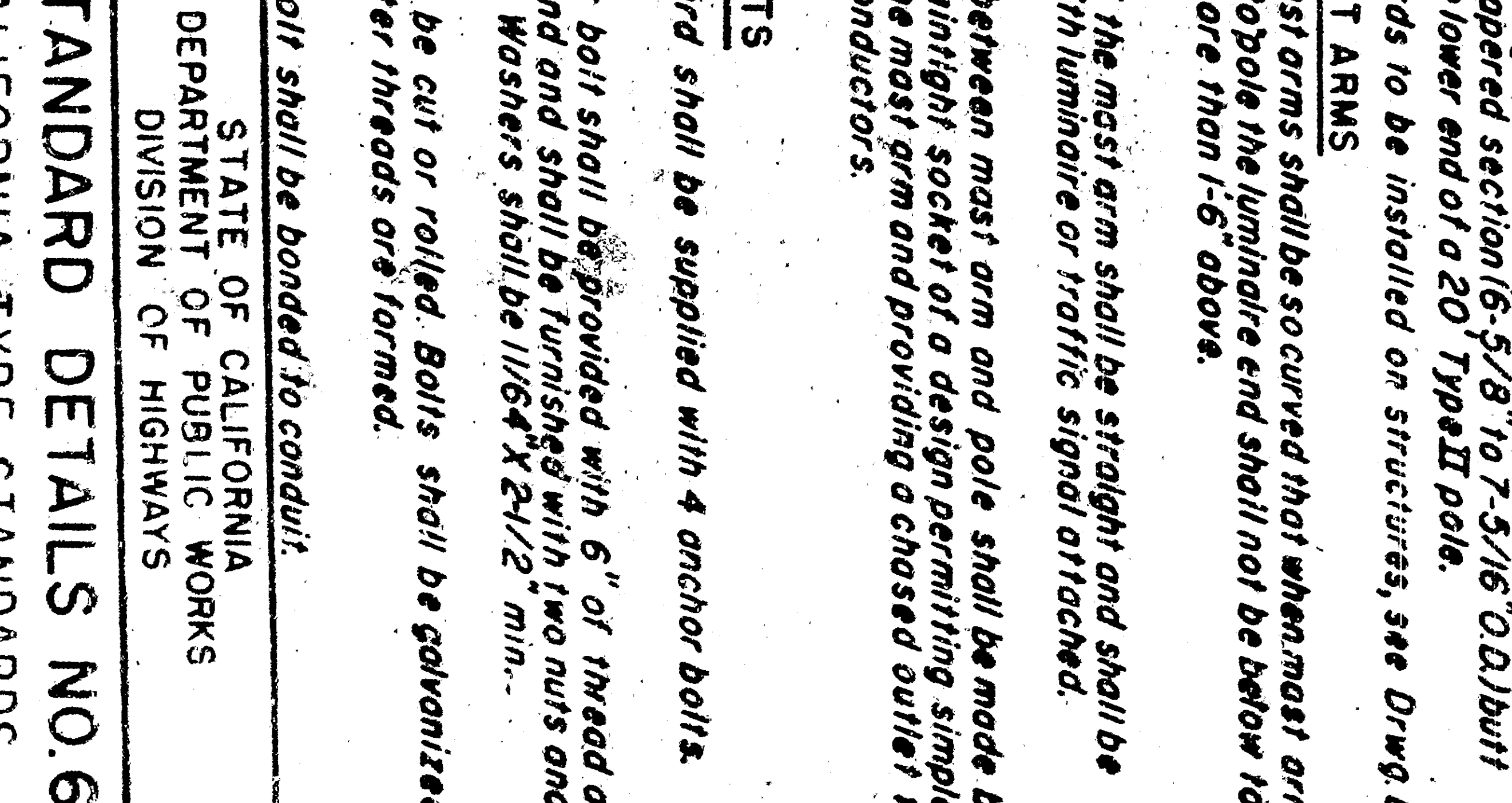
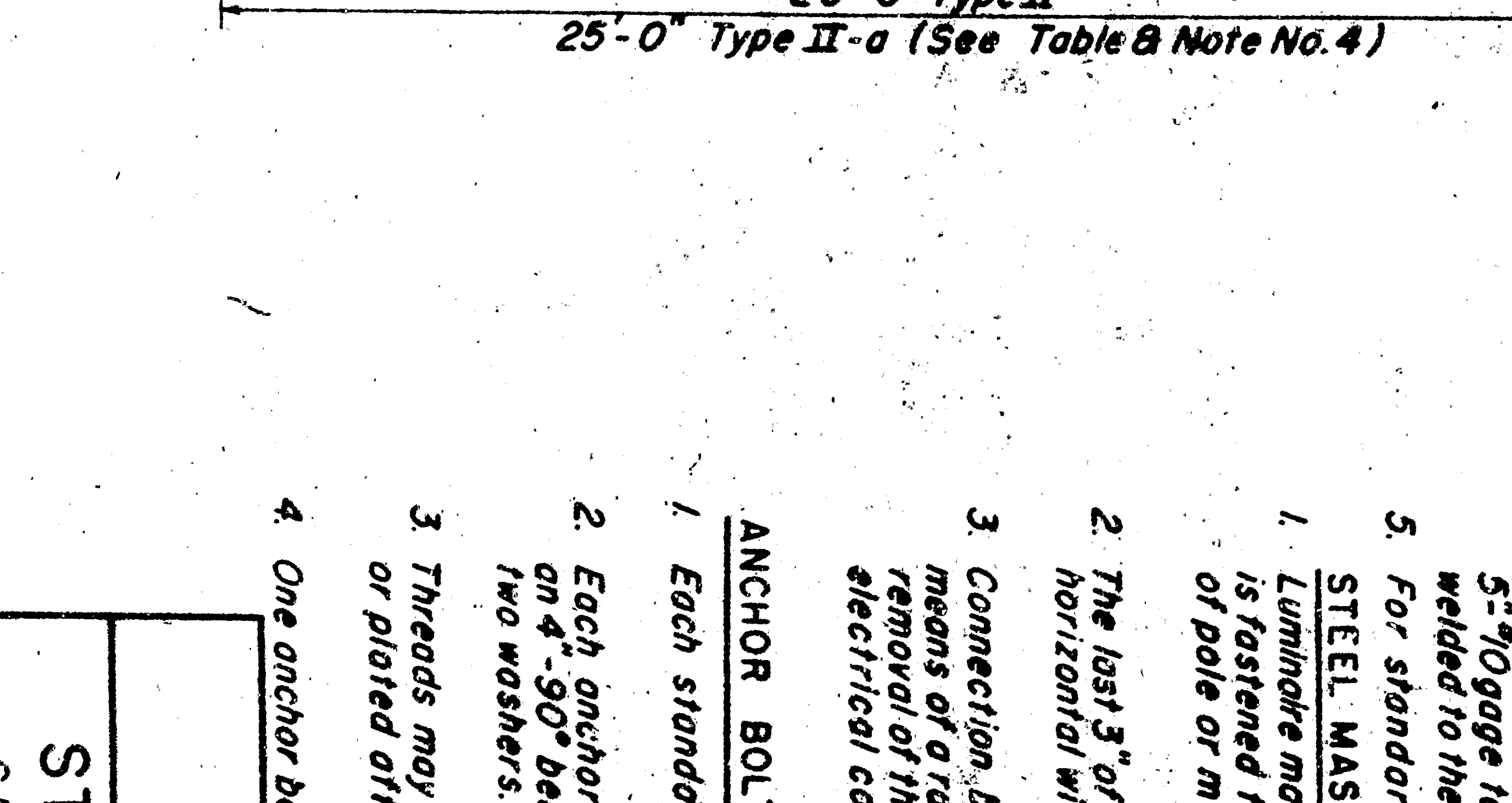
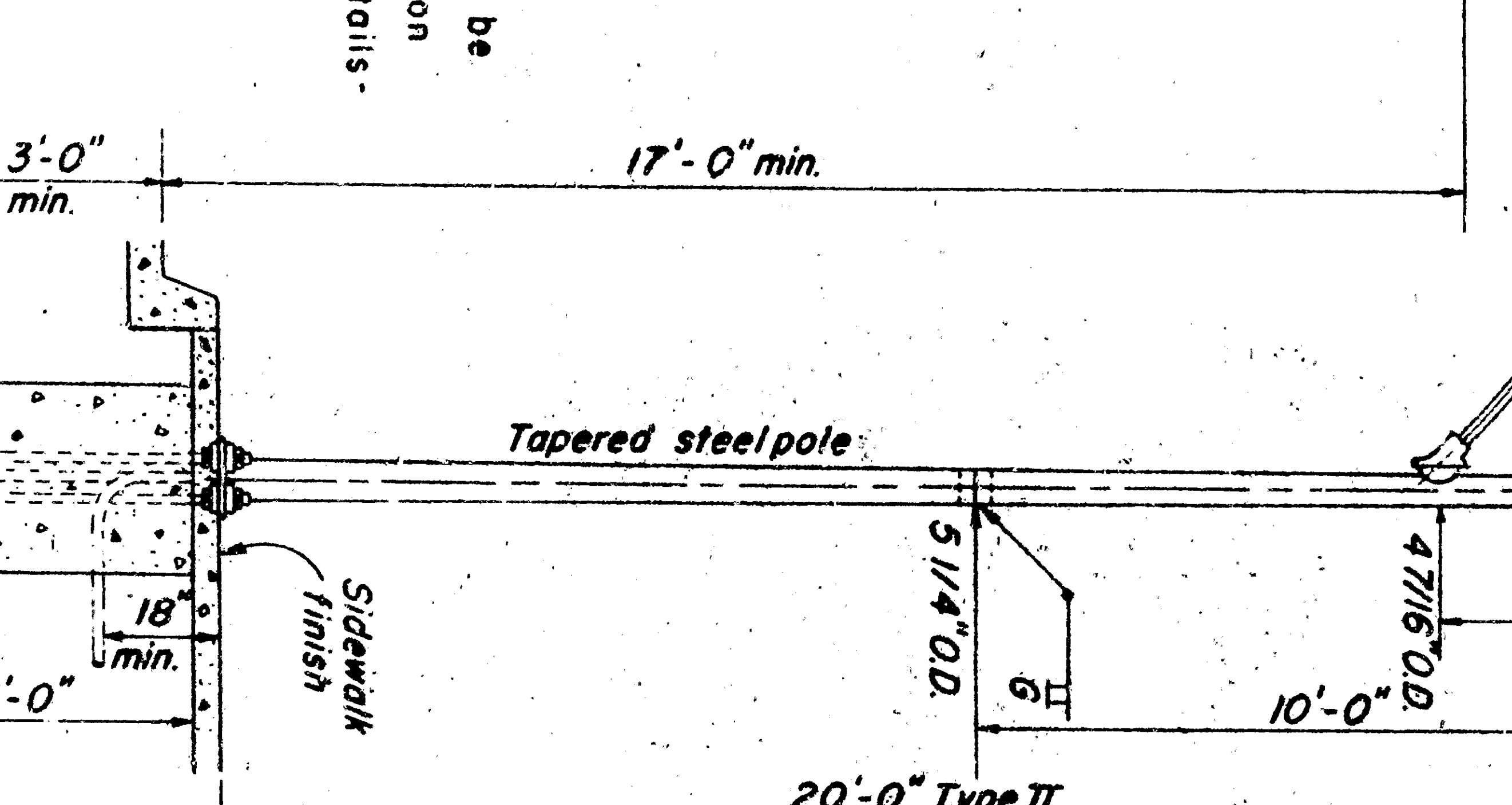
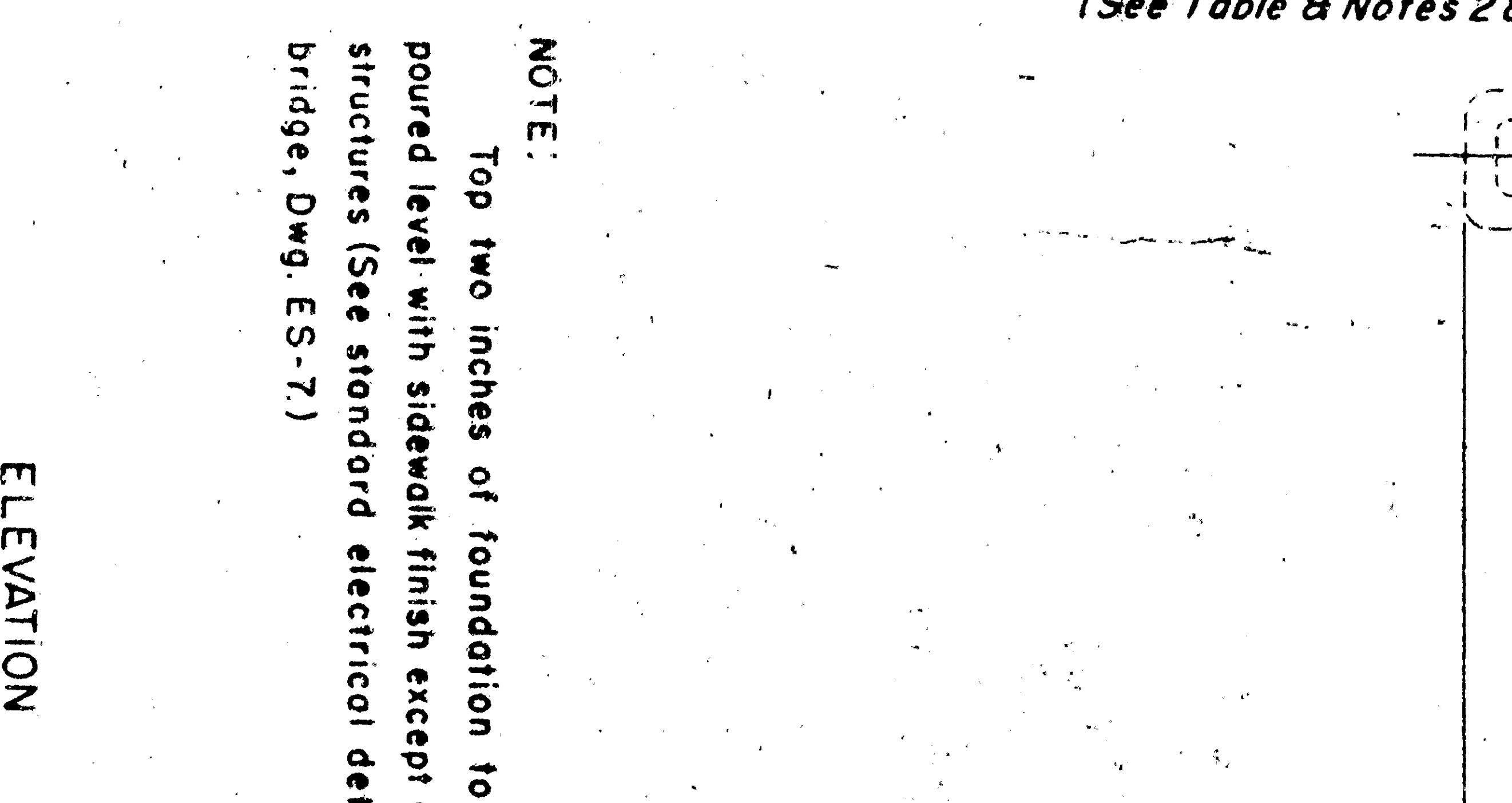
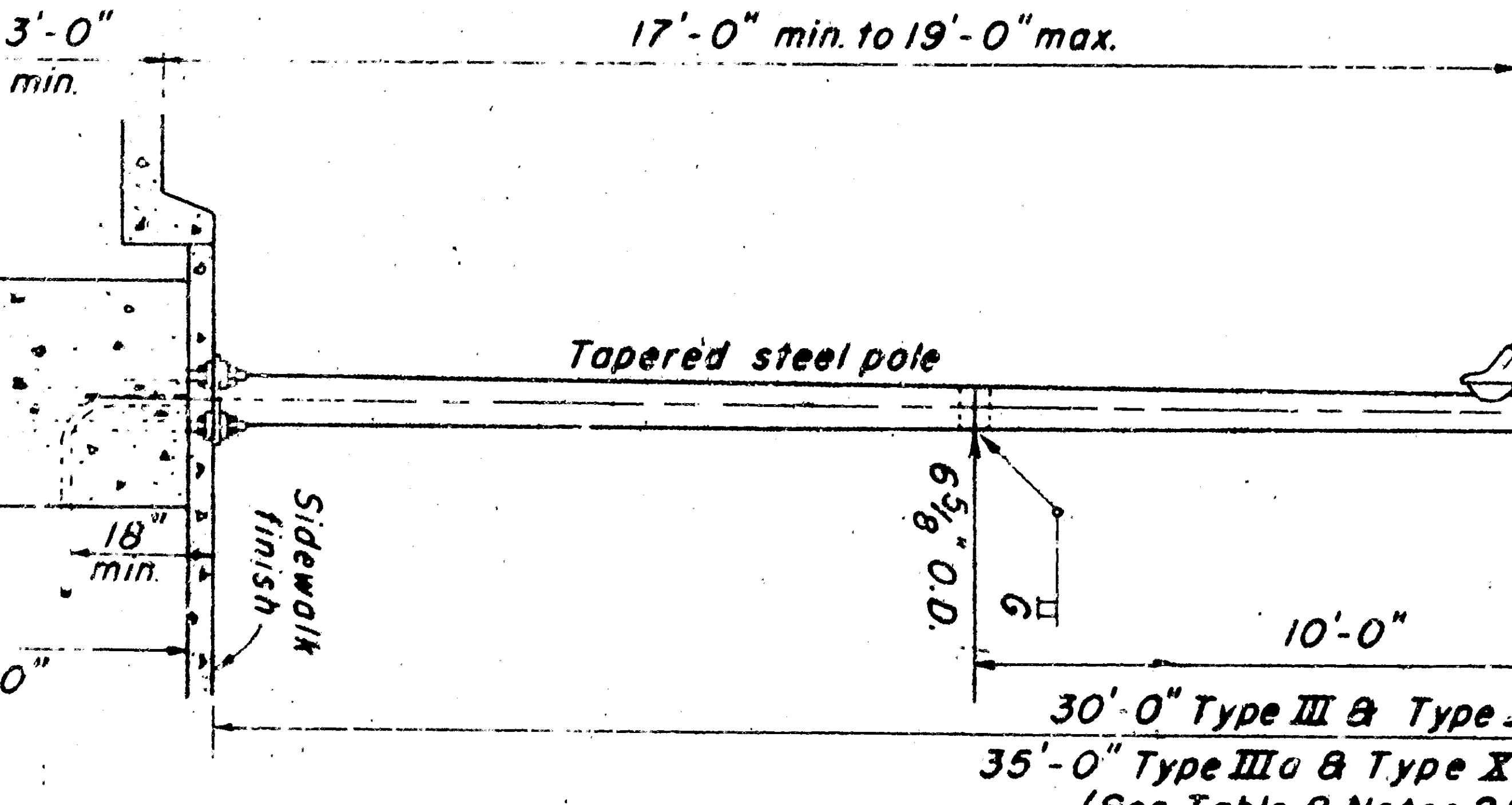
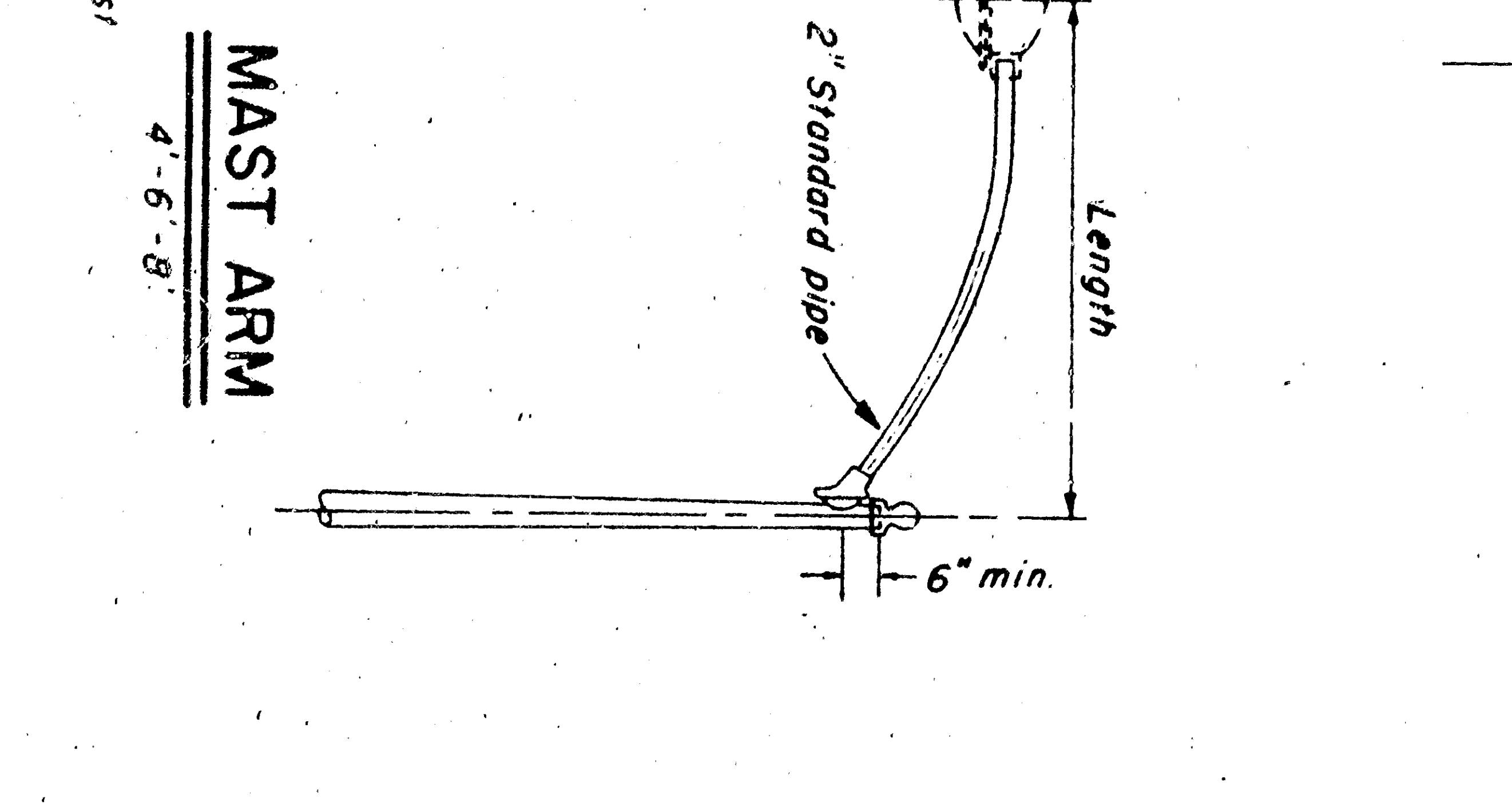
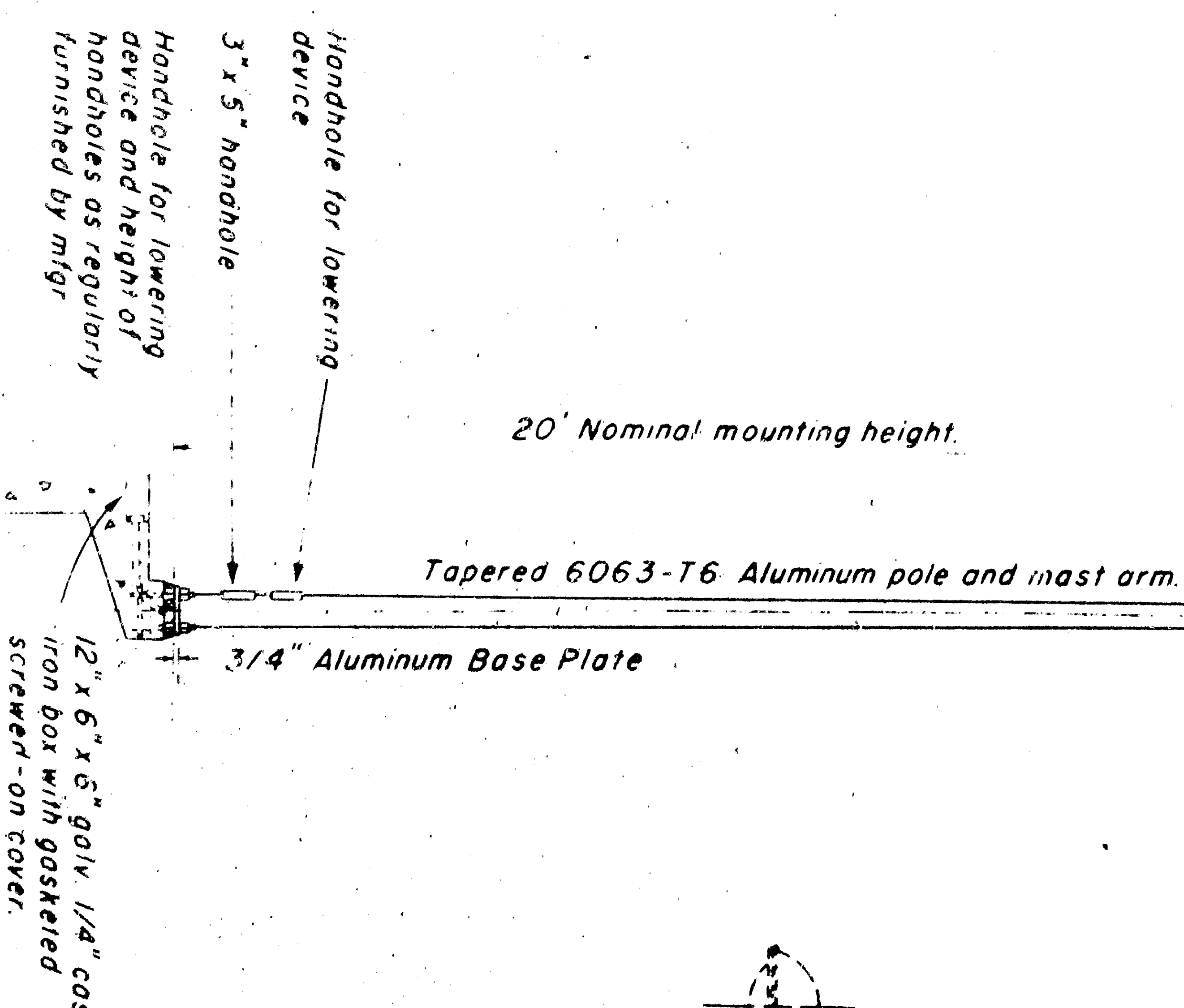
(Use for mast arms in excess of 8' in length)



### CALIF - TYPE STANDARDS

#### GENERAL AND INSTALLATION NOTES

- All steel shafts and mast arms shall be galvanized. Screws, nuts, washers and tie rods shall be galvanized.
  - The lower 5' length of a 35' Type III - a pole shall consist of a 5'-9" gage tapered section (8' O.D. to 8' 11/16" O.D.) but welded to the lower end of a 30' Type III pole.
  - The lower 5' length of a 35' Type X - a pole shall consist of a 5'-9" gage tapered section (8' O.D. to 8' 11/16" O.D.) but welded to the lower end of a 30' Type X pole.
  - The lower 5' length of a 25' Type II - a pole shall consist of a 5'-9" gage tapered section (6' 5/8" O.D. to 7' 5/16" O.D.) but welded to the lower end of a 20' Type II pole.
  - For standards to be installed on structures, see Drawg ES-7.
- #### STEEL MAST ARMS
- Luminaires mast arms shall be so curved that when mast arm is horizontal, luminaire end shall not be below top of pole or more than 1/8" above.
  - The last 3' of the mast arm shall be straight and shall be horizontal with luminaire or traffic signal at 1/4" below.
  - Connection between mast arm and pole shall be made by means of a rain-tight socket of a design permitting simple removal of the mast arm and providing a chased outlet for electrical conductors.
- #### ANCHOR BOLTS
- Each standard shall be supplied with 4 anchor bolts.
  - Each anchor bolt shall be provided with 6" of thread and an 4"-90° bend and shall be furnished with two nuts and two washers. Washers shall be 1/8" x 2 1/2" min.
  - Threads may be cut or rolled. Bolts shall be galvanized or plated after threads are formed.
  - One anchor bolt shall be bonded to conduit.



TYPE XIV  
 (TYPE I ELECTRIC)  
 SCALE 3/8" = 1'-0"

TYPE III & III-a OR TYPE X & X-a  
 (TYPE III SHOWN)  
 SCALE 3/8" = 1'-0"

TYPE II & II-a  
 (TYPE II SHOWN)  
 SCALE 3/8" = 1'-0"

STANDARD DETAILS NO. 6  
 CALIFORNIA - TYPE STANDARDS  
 20 ft., 25 ft., 30 ft., 35 ft., Pole Heights  
 SCALE AS NOTED  
 REV. DATE: 1/16/62  
 DRAWING E -

STATE OF CALIFORNIA  
 DEPARTMENT OF PUBLIC WORKS  
 DIVISION OF HIGHWAYS

APPROVED  
 December 1962  
 Station Shore Highway Engineer, C.E. Lic. No. 5283  
 10 ALBUQUERQUE PLANT BLDG.